

Exinda x800 WAN & Application Acceleration Solution

The Network Challenge

Business applications originally developed for use on LANs run inefficiently across the WAN and are hampered by bandwidth limitations and latency. Furthermore, repetitive data sent across the WAN increases total link utilization and network congestion. A multitude of applications compete for limited WAN resources causing further congestion and poor application response times. IT staffs are seeking an effective and economical alternative to adding more bandwidth to solve poor application performance. They need tools that can help them understand how the network is being used and improve application performance to support business goals.

The Solution

Exinda Networks provides a range of fully integrated WAN optimization and application acceleration appliances that boost the performance of applications over the WAN. Exinda's x800 appliances combine award-winning traffic management technology with advanced optimization and acceleration capabilities for the industry's most complete solution.

Exinda's x800 product family offers a full range of proven, resilient appliances to meet your application performance goals and budget requirements. The appliances provide extensive network reports as well as the ability to manage network usage, solve congestion issues and prioritize time-sensitive services. Users will benefit from faster, uninterrupted access to applications across town or across the world. Exinda's acceleration protocol is transparent, allowing for seamless network integration. Transparency means that implementation is simplified by leaving all access control rules and IDS/IPS policies intact.

Exinda Unified Performance Management (UPM)

Exinda's UPM appliances integrate application visibility, application response measurement, WAN optimization and application acceleration onto a single appliance with centralized management from Exinda's Service Delivery Point.

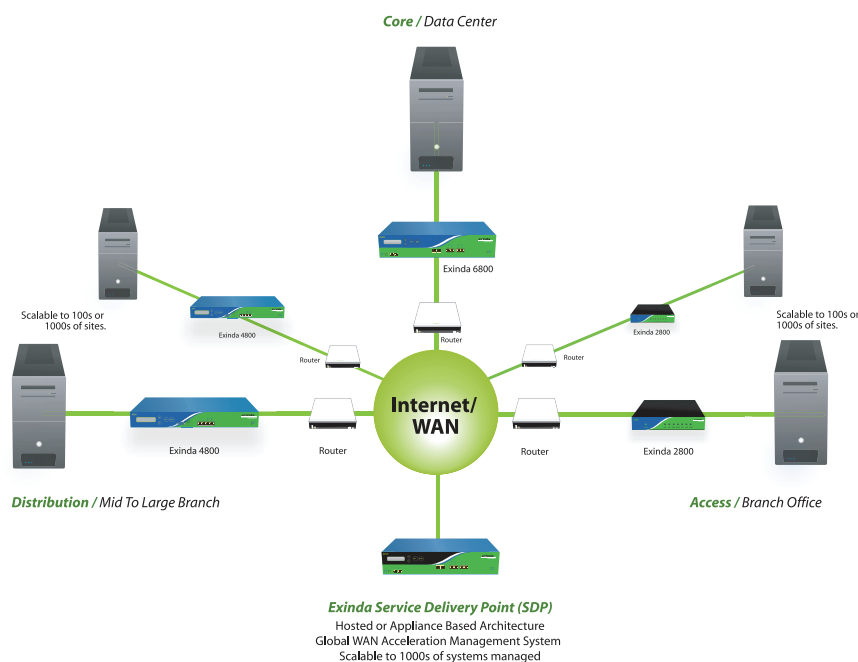


Product Brief

The Exinda x800 utilizes TCP, CIFS and application-specific acceleration, Exinda's WAN Memory (differencing), compression, Layer 7 traffic management and WAN optimization technology to improve application performance.

Benefits

- Delivers predictable application performance
- Provides application visibility at Layer 7
- Improves employee productivity
- Reduces infrastructure and communications costs
- Assists with network trouble shooting
- Reduces business continuity risks
- Optimizes VoIP implementations
- Enables server centralization and consolidation
- Reduces file back-up times



Exinda x800 WAN Optimization & Application Acceleration Solution

Specifications

Model	2800			4800				6800		
	Small Branch Office			Medium to Large Branch Office				Data Center		
Licensed Acceleration Bandwidth (Mbps)	1	2	6	1	2	10	20	10	20	45
WAN Optimization & Monitoring Bandwidth (Mbps)	10	10	10	2	15	45	100	100	500	500
Device Throughput (Mbps)	100	100	100	100	100	100	100	1Gbps	1Gbps	1Gbps
Max. Concurrent Flows	32000	32000	32000	32000	64000	128000	256000	256000	384000	384000
Automated PDF Reports	4	4	4	4	4	8	16	20	32	32
Configurable SLA Reports	10	10	20	20	70	100	120	100	250	250
Policies	64	128	128	128	128	256	384	1024	1536	1536
L7 Connection Rate (max/sec)	30	30	30	100	100	100	100	400	400	400
ARM Objects Monitored	2	5	5	5	5	5	10	10	20	20
Application Acceleration										
Accelerated TCP Connections	50	100	150	150	200	1200	2000	4000	5000	6000
CIFS Acceleration	■	■	■	■	■	■	■	■	■	■
Compression	■	■	■	■	■	■	■	■	■	■
WAFS Functionality	■	■	■	■	■	■	■	■	■	■
WAN Memory (Differencing)	■	■	■	■	■	■	■	■	■	■
Hardware										
Network Interfaces	4	4	4	4	4	4	4	7	7	7
Ethernet Bypass Pairs	1	1	1	1	1	1	1	2	2	2
Network Expansion (optional)	-	-	-	2	2	2	2	-	-	-
Console Port	RS-232 male DB-9			RS-232 male DB-9				1 x COM (RJ-45)		
Dual Power Supplies								■	■	■
Weight (kg)	3			6.5				18		
Dimensions (w×h×d)	214 x 44 x 150 mm 8.43" x 1.73" x 5.91"			424 x 43.5 x 380 mm 16.8" x 1.72" x 11"				424 x 88 x 530 mm 16.8" x 3.45" x 20.9"		
Power & Environment										
Power	100/240 VAC, 50–60Hz One power jack 12V, 5A			DC Maximum Requirement 100W 100/240 VAC, 50–60 Hz				DC Max. Req. 230W, AC/DC 90–245 VAC, full range@47–63 Hz		
Approvals	CE, FCC Certified / RoHS			CE, FCC Certified / RoHS				CE, FCC Certified / RoHS		
Disk Storage (GB)	40	40	40	250	250	250	250	500	500	500

Features

- TCP, CIFS & HTTP acceleration
- WAFS functionality
- WAN Memory (Differencing)
- Layer 7 classification with automated signature updates
- Policy-based QoS
- Real-time drill down
- Automated PDF reporting
- Service level management
 - Network service (remote SLA)
 - Application service (ARM)
- URL analysis (ASAM)
- SIP-based VoIP reporting
- Classify Citrix published applications (ASAM)
- Adaptive Response
- Auto Discovery
- 95th percentile calculations

Technology

Exinda's x800 appliances utilize the following techniques:

TCP Acceleration

Reduces the effects of latency by reducing unnecessary TCP round trips and automatically adapts TCP windows size to ensure WAN links are fully utilized.

CIFS & HTTP Acceleration

Uses specific protocol dialects to fully optimize CIFS & HTTP traffic; prefetching, read ahead and write behind further accelerate CIFS traffic. Exinda is particularly effective at improving CIFS performance for links with more than 30ms latency.

WAN Memory

Eliminates repetitive data leveraging both RAM caching for interactive applications and disk-based caching for large files and high speed links.

Application Monitoring

Applies behavioral application classification (heuristics) for faster classification and advanced detection of encrypted applications (Skype, BitTorrent); long term monitoring and drill down analysis provided in CSV, SQL and PDF formats delivered via scheduled emails or integrated alerting system.

Quality of Service (QoS) & Optimization

Applies relevant QoS policy in conjunction with acceleration techniques; ensures WAN is performing to full capacity and that applications that can't be accelerated (VoIP, Citrix) are fully optimized; also ensures acceleration will offer consistent benefits.



North America

300 Brickstone Square, Suite 201
Andover, MA 01810
United States

Tel +1 877 439 4632
+1 877 4 EXINDA

7390 Creek Road, Suite 204
Sandy, UT 84093
United States

Tel +1 877 439 4632
+1 877 4 EXINDA
Fax +1 877 219 0603

Australia

13 Harper Street
Abbotsford, VIC 3067

Tel: +61 3 9415 8332
Fax: +61 3 9415 8337
Toll Free: 1-800-EXINDA (in Australia only)
email: info.apac@exinda.com

Please visit www.exinda.com/public/contact.html for further international office locations.

© 2008 Exinda Networks. All rights reserved. Exinda® is a registered trademark of Exinda Networks PTY Ltd. Exinda 1700™, Exinda 2710™, Exinda 4700™, Exinda 4800™, Exinda 6700™, Exinda 6720™, Unified Performance Management and Service Delivery Point are trademarks of Exinda Networks PTY Ltd. All other product names, company names, trademarks, registered trademarks, logos, and symbols are the property of their respective owners.